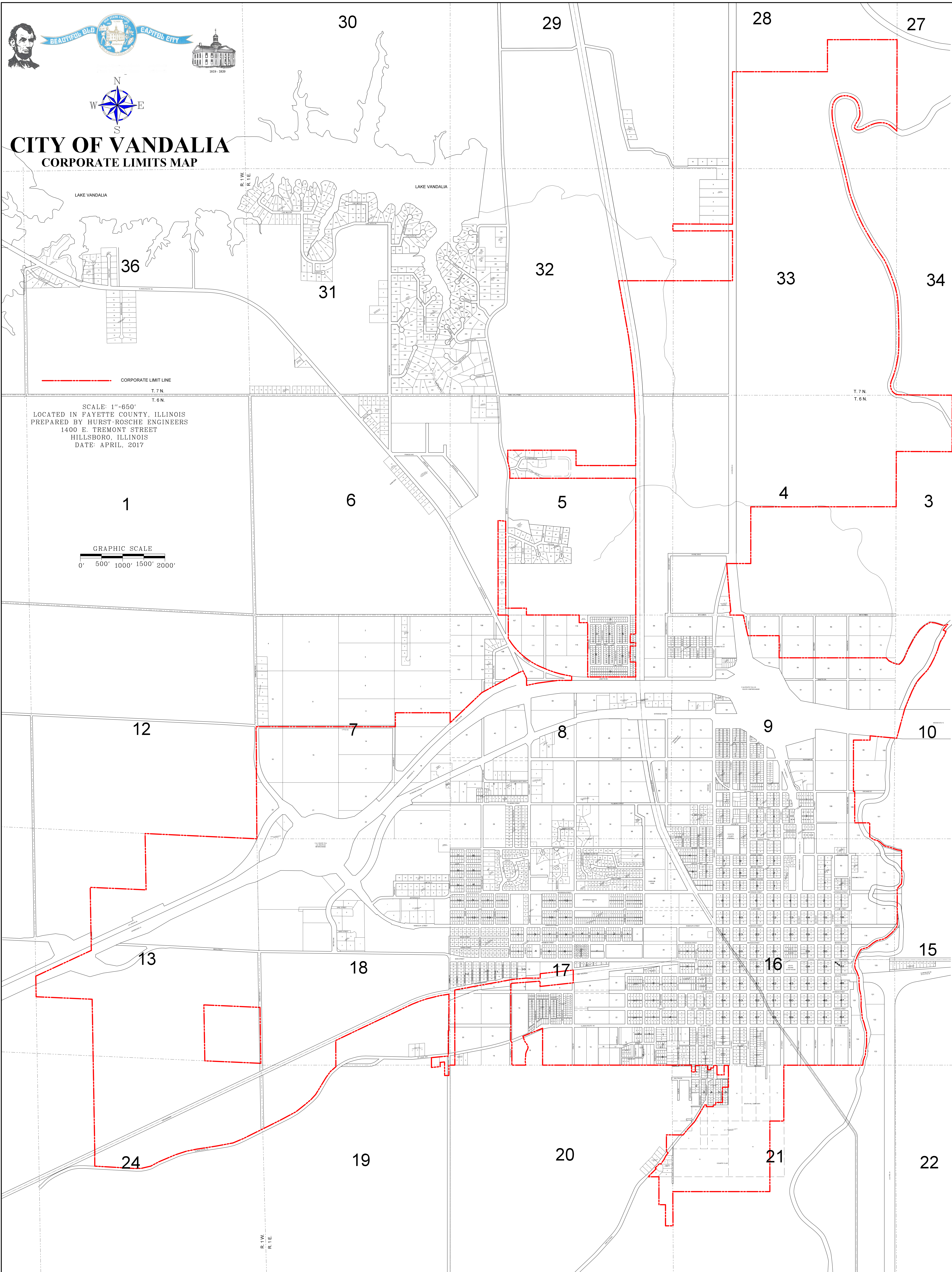
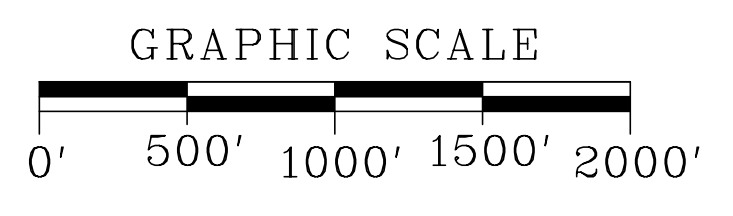


# CITY OF VANDALIA CORPORATE LIMITS MAP



SCALE: 1"=650'  
LOCATED IN FAYETTE COUNTY, ILLINOIS  
PREPARED BY HURST-ROSCH ENGINEERS  
1400 E. TREMONT STREET  
HILLSBORO, ILLINOIS  
DATE: APRIL, 2017



CORPORATE LIMIT LINE

T. 7 N.

T. 6 N.

T. 7 N.

T. 6 N.

R.T.W.  
R.T.E.